

AgiPad 2 (Version 1)

Package contents:

- 1 x Touch Sensing Mat
- 1 x Controller
- 1 x Travel Packaging
- 1 x Connection cable
- 4 x AA battery (inserted in the Controller)
- 1 x This manual

Preparation:

1. Take the AgiPad Mat and Controller out of the Travel packaging.
2. Attach the Mat to the obstacle in the area of the Zone.* Fasten the straps firmly under the obstacle.
3. Connect the Mat And the Controller with the Connection cable: **
 - a. Plug the “L” shaped connector to the socket on the Mat side. (Fig. 1)
 - b. Plug the “I” shaped connector to the socket on the Controller side. (Fig. 2)
4. For AgiPad Mat A, store the cable in the included Velcro pocket (Fig. 5, Fig. 6)
5. Optionally, attach a second AgiPad Mat to the Controller (Fig. 3). Ensure that the Mats do not touch (Fig. 4).
6. Hang the Controller by the upper strap under the obstacle.

* IMPORTANT: AgiPad was developed, tuned and tested for use on an obstacle. Other uses are possible but not warranted.

** WARNING: The Connection cable is assembled with JACK audio plugs. Do not connect the AgiPad Mat to a device other than the AgiPad Controller. Likewise, do not connect any device other than AgiPad Mat to the AgiPad controller. Such an approach might lead to unpredictable behaviour or damage to the product.

Fig. 1

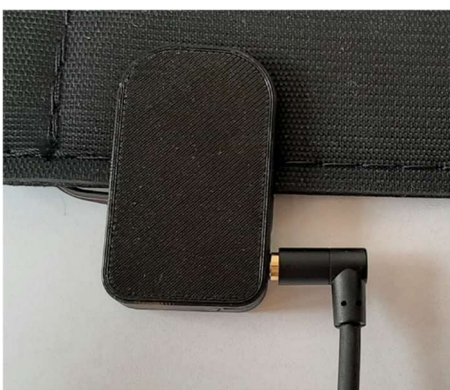


Fig. 2



Fig. 3



Fig. 4

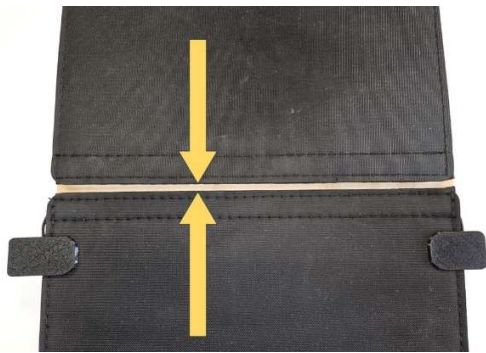


Fig. 5



Fig. 6



Start (1 Mat):

1. Move the power switch of the Controller to the “I” position - ON.
2. Calibration of the optimal sensitivity of the AgiPad
 - a. During the first 10 seconds after switching AgiPad ON, touch the upper surface of the Mat and press gently.
 - b. You will hear a specific sound indicating a successful calibration. *
3. Adjust the volume as needed with the volume knob.



* ADVICE 1: For the maximum sensitivity, do not touch the Mat during the calibration period. After 10 seconds the calibration is done, you will hear the same specific sound and the AgiPad will continue at maximum sensitivity.



* ADVICE 2: For the lightest dogs (less than 3 kg), we recommend calibrating directly with them or keeping the maximum sensitivity.

* CAUTION: In case of the heavier dogs, the maximum sensitivity might lead to an erroneous touch evaluation caused by vibrations of the obstacle.

Start (2 Mats):

1. Move the power switch of the Controller to the “I” position - ON.
2. Calibration of the optimal sensitivity of the AgiPad
 - a. During the first 10 seconds after switching AgiPad ON, touch the upper surface of the first Mat and press gently.
 - b. You will hear a specific sound indicating the successful calibration of the first Mat. *
 - c. Release the first Mat **
 - d. Within another 10 seconds after calibrating the first Mat, touch the top touch surface of the second Mat and press gently.
 - e. You will hear a specific sound indicating the successful calibration of the second Mat. *
3. Adjust the volume as needed with the volume knob.

* ADVICE 1: A Mat that is not touched during calibration will continue in maximum sensitivity mode. Either one or both Mats can operate in maximum sensitivity mode.

** CAUTION: During calibration of 2 Mats, do not touch both Mats at the same time, otherwise incorrect calibration will occur resulting in reduced sensitivity and the need to repeat the calibration process. Always make sure to release the first calibrated Mat first before touching the second Mat.

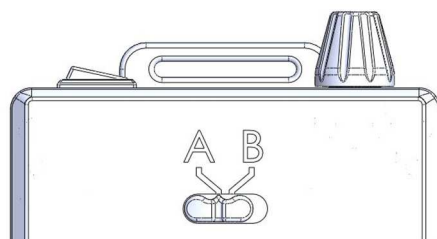
Functionality mode selection

The functionality mode selection is for use with **two** Mats connected to the Controller. In the case of a single Mat connection, the mode selection does not affect the functionality of the AgiPad.

Mode A

- Set the mode switch to "A" (Fig. 7).
- The attached Mats are viewed as one connected Mat.
 - The AgiPad signals the touch of any Mat with the same tone
 - (One-Beep-Per-Run) It is necessary to leave the first Mat first and only then will the touch of the second Mat be detected.

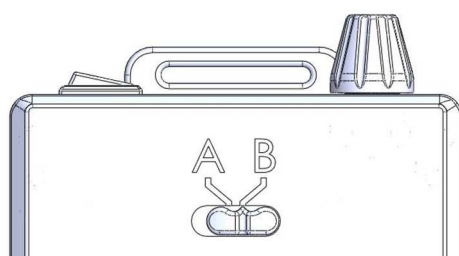
Fig. 7



Mode B

- Set the mode switch to „B“ (Fig. 8).
- The attached Mats are viewed as two separate Mats.
 - AgiPad signals the touch of each Mat with a different tone
 - The AgiPad signals the touch of the second Mat even if the first Mat is still occupied. However, a second touch of the same Mat is governed by the One-Beep-Per-Run rule.

Fig. 8

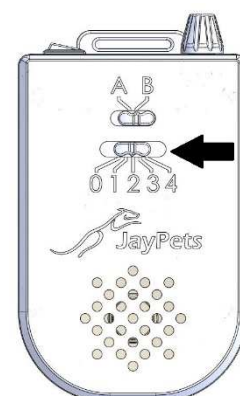


Treat and Train

To connect to the Treat and Train, you must purchase the Controller in the Treat and Train variant (Fig. 9).

- Select the desired channel on the Treat and Train "1-2-3-4" channel selector slide switch.
- Select "0" on the Treat and Train channel selector slide switch to turn off reward mode.
- Set the same channel on your Treat and Train
- Each time a touch is detected according to the mode setting (see [Functionality mode selection](#)) of your AgiPad 2, an instruction is sent to issue a reward to your Treat and Train

Fig. 9



TIP: It is possible to completely turn down your AgiPad 2 volume and continue to use only your Treat and Train audio.

Watch out for:

- The Controller is not waterproof. Protect from rain, for example by hanging under an obstacle.
- The Mat can withstand a small amount of water on its surface (light rain). Larger amounts of water (immersion in a puddle) will cause the Mat to malfunction. To restore the functionality, dry the Mat thoroughly. Prolonged immersion of the Mat in water or other liquid may affect its life. Therefore, try to avoid such situations.
- Be sure to turn off the AgiPad after your workout. This will significantly extend the life of the batteries.
- Do not extremely bend or break the mat (Fig. 10). You will extend its service life and maintain reliability.

Fig. 10



Fig. 11



Protect the cable against damage

- Grasp the rigid plug of the cable between your fingers (Fig. 12)
- Do not pull the cable (Fig. 13)
- Do not break the cable (Fig. 14)

Fig. 12



Fig. 13

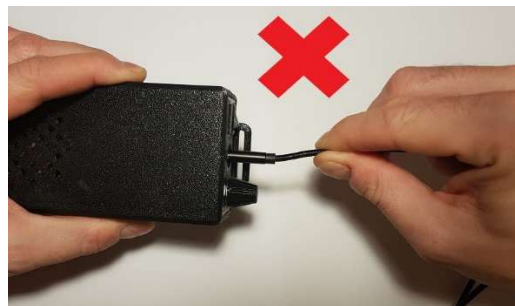


Fig. 14



One-Beep-Per-Run

The One-Beep-Per-Run feature ensures that AgiPad signals only the first touch in a run. The One-Beep-Per-Run feature reduces the possibility of multiple beeps caused by two or more steps on the Mat in one run, which could confuse you and your dog.



NOTE: If you test the AgiPad with your finger, be sure to wait at least 0.5 seconds before touching the Mat again.

Warnings and notifications

Mat connection error

- Three decreasing tone beeps, the error is reminded every 10 seconds
- Reason: The signal between the Mat and the Controller was lost or not detected.
- Solution:
 - Make sure that the cable is well plugged into the JACK sockets both on the Controller and the Mat side.
 - This error is irreversible. Restart the Controller.

Signal error

- Three high level tone beeps, the error is reminded every 3 seconds
- Reason: The sensing signal got out of the acceptable range. This happens when, for example, the Mat gets wet.
- Solution:
 - First, try to dry the Mat with a piece of dry cloth. Focus especially on the seams and edges of the Mat. If the moisture level is low, AgiPad will recover, the notification will be cancelled, and you can continue with your training.
 - If the moisture is high, the notification will continue. In this case, remove the Mat from the obstacle, move it to a dry place and let it dry thoroughly before using it again.
 - If the error is detected during the calibration period (10 seconds after start-up), the error is irreversible. If the error conditions disappear, the audible notification will be terminated. However, AgiPad will not recover in this case and a restart is required.

Maintenance

- Clean the surface of the Mat by hand with a damp cloth. Heavy soaking, for example by deep immersion, will cause the Mat needs to be dried thoroughly before next use. The lifespan of the Mat may be negatively affected as well.
- **WARNING:** Do not attempt to wash the AgiPad in an automatic washing machine or other than as described in this document. It may lead to irreversible damage to the AgiPad.
- To prolong the life of the AgiPad, we recommend storing the Mat in an unrolled state.
- **WARNING:** There is a USB-C connector (Fig. 15) in the battery compartment used to manufacture and maintain the AgiPad 2. Do not connect this connector to your computer unless instructed to do so.

Fig. 15

