

AgiPad 2 (Version 3)

Package contents:

- 1 x Touch Sensing Mat
- 1 x Controller
- 1 x Travel Packaging
- 1 x Connection Cable
- 4 x AA Battery (inserted in the Controller)
- 1 x This manual

Variants of AgiPad 2

The AgiPad 2 is available in three variants depending on the connectivity with the remote reward trainer (Fig. 1):

LITE	Basic functionality only. No connection to the reward trainer.
Treat and Train	Connectable to the Petsafe Treat and Train reward trainer.
Teach and Treat	Connectable to the Petsafe Teach and Treat reward trainer.

Fig. 1



Preparation:

1. Take the AgiPad Mat and Controller out of the Travel packaging.
2. Attach the Mat to the obstacle in the area of the Zone.* Fasten the straps firmly under the obstacle.
3. Connect the Mat and the Controller with the Connection Cable: **
 - a. Plug the "L" shaped connector to the socket on the Mat side (Fig. 2);
 - b. Plug the "I" shaped connector to the socket on the Controller side (Fig. 3).
4. For AgiPad Mat A, store the cable in the included Velcro pocket (Fig. 6, Fig. 7).
5. Optionally, attach a second AgiPad Mat to the Controller (Fig. 4). Ensure that the Mats do not touch (Fig. 5).
6. Hang the Controller by the upper strap under the obstacle.

* IMPORTANT: AgiPad was developed, tuned and tested for use on an obstacle. Other uses are possible but not under warranty.

- ** WARNING:** The Connection Cable is assembled with JACK audio plugs. Do not connect the AgiPad Mat to a device other than the AgiPad Controller. Likewise, do not connect any device other than AgiPad Mat to the AgiPad Controller. This type of approach might lead to unpredictable behaviour or damage to the product.
- ** WARNING:** Use only the cables supplied or recommended by the manufacturer of this device. According to the current device certification, the cable length must be less than 3 meters.

Fig. 2

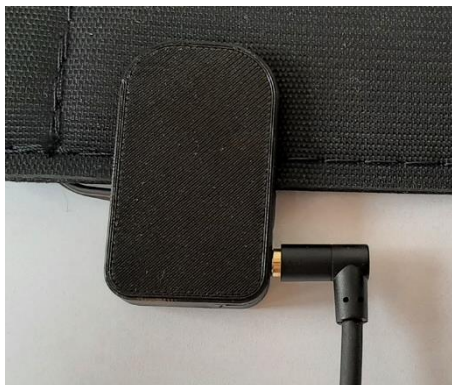


Fig. 3



Fig. 4



Fig. 5

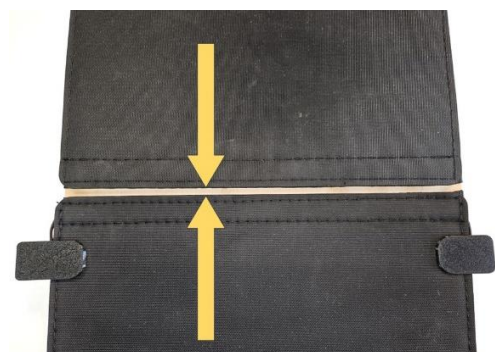


Fig. 6



Fig. 7



Start (1 Mat):

1. Move the power switch of the Controller to the "I" position – ON.
2. Calibration of the optimal sensitivity of the AgiPad:
 - a. During the first 10 seconds after switching AgiPad ON, touch the upper surface of the Mat and press gently;
 - b. You will hear a specific sound indicating a successful calibration. *
3. Adjust the volume as needed with the volume knob.



* TIP 1: For the maximum sensitivity, do not touch the Mat during the calibration period. After 10 seconds the calibration is done. You will hear the same specific sound, and the AgiPad will continue at maximum sensitivity.



* TIP 2: For the lightest dogs (less than 3 kg), we recommend calibrating directly with them or keeping the maximum sensitivity.

* CAUTION: In case of the heavier dogs, the maximum sensitivity might lead to an erroneous touch evaluation caused by vibrations of the obstacle.

Start (2 Mats):

1. Move the power switch of the Controller to the "I" position – ON.
2. Calibration of the optimal sensitivity of the AgiPad:
 - a. During the first 10 seconds after switching AgiPad ON, touch the upper surface of the first Mat and press gently;
 - b. You will hear a specific sound indicating the successful calibration of the first Mat; *
 - c. Release the first Mat; **
 - d. Within another 10 seconds after calibrating the first Mat, touch the top touch surface of the second Mat and press gently;
 - e. You will hear a specific sound indicating the successful calibration of the second Mat. *
3. Adjust the volume as needed with the volume knob.

* TIP 1: A Mat that is not touched during calibration will continue in maximum sensitivity mode. Either one or both Mats can operate in maximum sensitivity mode.

** CAUTION: When calibrating 2 Mats, do not touch both Mats at the same time; otherwise, incorrect calibration will occur, resulting in reduced sensitivity and the need to repeat the calibration process. Always make sure to release the first calibrated Mat first before touching the second Mat.

Functionality mode selection

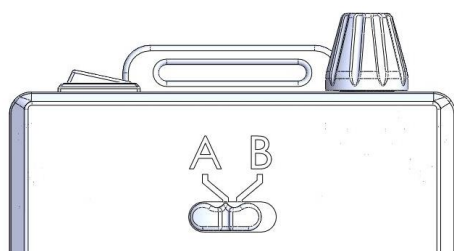
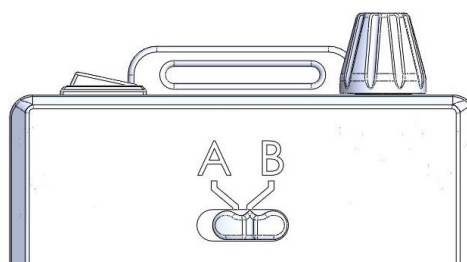
The functionality mode selection is for use with **two** Mats connected to the Controller. In the case of a single Mat connection, the mode selection does not affect the functionality of the AgiPad.

Mode A

- Set the mode switch to "A" (Fig. 8).
- The attached Mats are viewed as one connected Mat:
 - The AgiPad signals the touch of any Mat with the same tone;
 - (One-Beep-Per-Run) It is necessary to leave the first Mat first and only then will contact with the second Mat be detected.

Mode B

- Set the mode switch to "B" (Fig. 9).
- The attached Mats are viewed as two separate Mats:
 - AgiPad signals the touch of each Mat with a different tone;
 - The AgiPad signals the touch of the second Mat even if the first Mat is still occupied. However, a second touch of the same Mat is governed by the One-Beep-Per-Run rule.

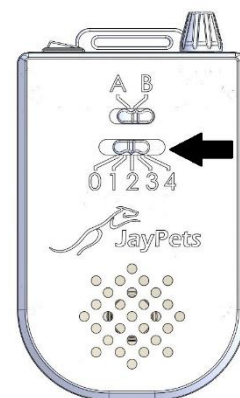
Fig. 8*Fig. 9*

Treat and Train

To connect to the Treat and Train, you must purchase the Controller in the Treat and Train variant (Fig. 1).

- Select the desired channel on the Treat and Train “1-2-3-4” channel selector slide switch. (Fig. 10)
- Select “0” on the Treat and Train channel selector slide switch to turn off the reward mode.
- Set the same channel on your Treat and Train.
- Each time contact is detected according to the mode setting (see [Functionality mode selection](#)) of your AgiPad 2, an instruction is sent to issue a reward to your Treat and Train.

Fig. 10



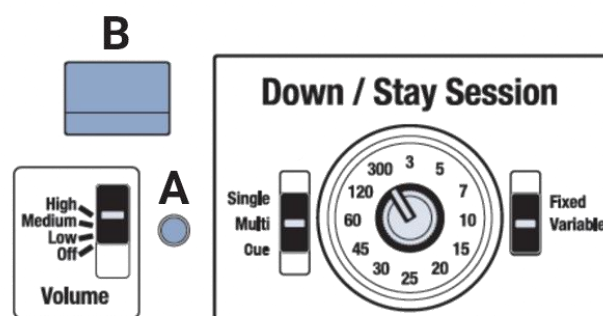
TIP: It is possible to completely turn down your AgiPad 2 volume and continue to use only your Treat and Train audio.

Teach and Treat

Fig. 11



Fig. 12



In order to connect to the Teach and Treat reward trainer, you must purchase the Teach and Treat Control Box (Fig. 1).

- Connect at least one AgiPad Pad to the Box and turn it on as described in the [Preparation](#) and [Start](#) chapters above.
- On the Teach and Treat channel selection slide switch "1-2-3-4" (Fig. 11), select the desired channel.
- Select "0" on the Teach and Treat channel selector slide switch to turn off the reward mode.
- On the control panel of your Teach and Treat (Fig. 12), **press and hold the pairing button (A)** until the indicator light **(B)** on this panel flashes.
- **Touch the Pad.** AgiPad 2 sends an instruction to issue the reward. Once accepted, your Teach and Treat will complete the pairing process with your AgiPad 2 and its indicator light will stop flashing.
- Every time another touch is detected according to the mode setting (see [Functionality mode selection](#)) of your AgiPad 2, a reward issue instruction is sent to your Teach and Treat

WARNING: After you have successfully paired AgiPad 2 with Teach and Treat, do not change the channel selector slide switch settings. If this happens, your Teach and Treat will not respond to your AgiPad 2. To restore functionality, re-set your AgiPad 2 to the channel you used during the pairing process with your Teach and Treat. By setting up the original communication channel on the AiPad 2, it is no longer necessary to repeat the pairing process.

NOTE: To change the channel, you must set a new channel on the channel selection slide switch and repeat the pairing process with your Teach and Treat as described in this chapter.

NOTE 2: If you are also using the **JayPets Teach and Treat Remote**, you do not need to go through the pairing process again. Just set the same channel on the channel selection slide switch on your AgiPad 2 and your Teach and Treat Remote.

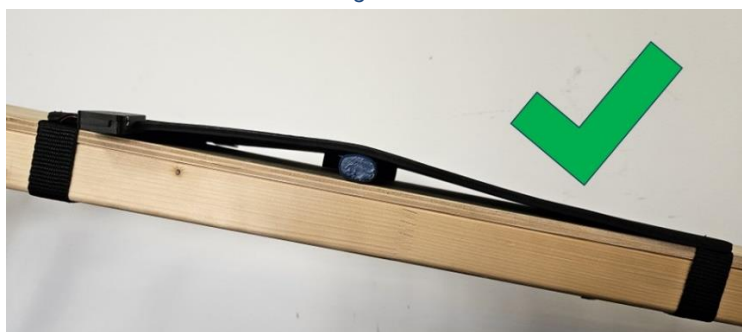
Watch out for:

- The Controller is not waterproof. Protect from rain, for example by hanging it under the obstacle.
- The Mat can tolerate a small amount of water on its surface (light rain). Larger amounts of water (immersion in a puddle) will cause the Mat to malfunction. To restore the functionality, dry the Mat thoroughly. Prolonged immersion of the Mat in water or other liquid may affect its life. Therefore, try to avoid such situations.
- Be sure to turn off the AgiPad after your workout. This will significantly extend the life of the batteries.
- Do not excessively bend or break the mat (Fig. 13). You will extend its service life and maintain reliability.

Fig. 13



Fig. 14



Protect the cable against damage

- Grasp the rigid plug of the cable between your fingers (Fig. 15).
- Do not pull the cable (Fig. 16).
- Do not break the cable (Fig. 17).

Fig. 15



Fig. 16

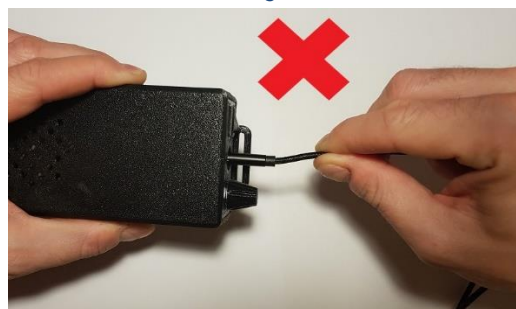


Fig. 17



One-Beep-Per-Run

The One-Beep-Per-Run feature ensures that AgiPad signalizes only the first touch in a run. The One-Beep-Per-Run feature reduces the possibility of multiple beeps caused by two or more steps on the Mat in one run, which could confuse you and your dog.



NOTE: If you test the AgiPad with your finger, be sure to wait at least 0.5 seconds before touching the Mat again.

Warnings and notifications

Mat connection error

- Three decreasing tone beeps, the error is reminded every 10 seconds.
- Reason: The signal between the Mat and the Controller was lost or not detected.
- Solution:
 - Make sure that the cable is well plugged into the JACK sockets both on the Controller and the Mat side.
 - This error is irreversible. Restart the Controller.

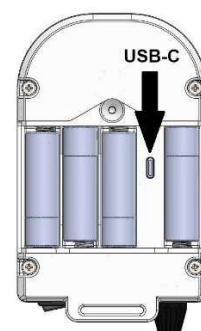
Signal error

- Three high level tone beeps, the error is reminded every 3 seconds.
- Reason: The sensing signal got out of the acceptable range. This happens when, for example, the Mat gets wet.
- Solution:
 - First, attempt to dry the Mat with a piece of dry cloth. Focus especially on the seams and edges of the Mat. If the degree of dampness is low, AgiPad will recover, the notification will be cancelled, and you can continue with your training.
 - If the degree of dampness is high, the notification will continue. In this case, remove the Mat from the obstacle, move it to a dry place and let it dry thoroughly before using it again.
 - If the error is detected during the calibration period (10 seconds after start-up), the error is irreversible. If the error conditions disappear, the audible notification will be terminated. However, AgiPad will not recover in this case and a restart is required.

Maintenance

- Clean the surface of the Mat by hand with a damp cloth. Heavy soaking, for example, by deep immersion, mean the Mat will need to be dried thoroughly before next use. The lifespan of the Mat may be negatively affected as well.
- WARNING: Do not attempt to wash the AgiPad in an automatic washing machine or machine other than as described in this document. It may lead to irreversible damage to the AgiPad.
- To prolong the life of the AgiPad, we recommend storing the Mat in an unrolled state.
- WARNING: There is a USB-C connector (Fig. 18) in the battery compartment used to manufacture and maintain the AgiPad 2. Do not connect this connector to your computer unless instructed to do so.

Fig. 18



Compliance with Regulations

By affixing the symbol to this product, we confirm compliance with the relevant European safety directives. Health and environmental protection that can be applied to this product

Information for users on the disposal of electrical and electronic equipment (households)

This symbol on the products or in accompanying documents means that the electrical and electronic products used must not be added to normal municipal waste. For proper disposal, refurbishment and recycling, take these products to the designated collection points where they will be accepted free of charge.

Alternatively, in some countries you can return your products to your local retailer when purchasing an equivalent new product. By properly disposing of this product, you will help conserve valuable natural resources and help prevent potential negative environmental and human health impacts that could result from improper waste disposal. Contact your local authority or the nearest collection point for further details. Improper disposal of this type of waste may result in penalties in accordance with national regulations.

For business users in European Union countries

To dispose of electrical and electronic equipment, contact your dealer or supplier for the necessary information.

Information on disposal in other countries outside the European Union

This symbol is only valid in the European Union. If you wish to discard this product, please contact your local authorities or dealer and ask for the correct method of disposal.

CUSTOMER SERVICE:

Our team of Customer Service Specialists are ready to assist you whenever you need it, including the following:

- Hints and tips on how to troubleshoot appliance problems
- Information and practical advice on how to get the most out of your appliance
- Repairs serviced by JayPets
- Instructions and product information

email: jay@jaylabs.com

FB, Messenger: <https://www.facebook.com/jaypetsczech>

WARRANTY TERMS AND CONDITIONS

Thank you for purchasing an AgiPad by JayPets. The warranty card provides a guarantee for your new AgiPad product.

The AgiPad is guaranteed for 24 months from the date of purchase. The warranty can only be claimed upon presentation of the original proof of purchase of the product (receipt, invoice) with the type designation of the product, date of sale and legible stamp of the seller. This warranty covers manufacturing defects and malfunctions that are not caused by improper use, modifications or unprofessional intervention. After the warranty period has expired, the product will be repaired for a fee. The manufacturer is not liable for any damage or injury to persons or animals due to improper use of the appliance and failure to follow the instructions in the instruction manual.

The contractual warranty is 6 months if the buyer is an entrepreneur - a natural person and buys the appliance for business or commercial use.

Warranty does not apply-

- To any mechanical damage to the product or any part thereof.
- To any defects caused by improper handling or placement.
- To wear and tear due to normal use.
- If the device is operated in a manner inconsistent with the instructions or by an unauthorised person.
- If the device is improperly used, stored or transported.
- If the fault was caused by external and natural conditions (e.g. rain, frost)
- The 24-month warranty does not cover repairs.

Complaint procedure:

1. Before making a claim, please contact us at jay@jaypets.com or on our social media channels.
2. After agreement, send the product together with a cover letter containing your name, address, phone number and email and proof of purchase.
3. Your claim will be processed within 30 working days from the date of receipt of the product.

If the goods are sent by post or by a transport service when the consumer claims a defect, they must be packed in packaging suitable for transport so as to prevent damage to the product.

Thank you for the trust you have placed in JayPets products. We believe that AgiPad will help you achieve excellent results in agility training.

Manufacturer:

JayLabs s.r.o.
Lamačova 634/2
Prague 5, 152 00
CZECH REPUBLIC
www: www.jaypets.shop
Email: jay@jaylabs.com